

LBS

# NATURAL STONE CLADDING RANGE


CREATE A BEAUTIFUL NATURAL  
STONE WALL FINISH WITH  
LBS Z-STONE & STONE VENEER.



**stone**  
**veneer**

NATURAL **SLATE & STONE** SPECIALISTS



- 
- Quick and easy to install. No specialist skill required.
  - Extremely cost-effective compared to traditional stone masonry.
  - Minimal wastage. No mess, no fuss.
  - Available in a wide range of natural stone finishes.
  - Suitable for both interior and exterior application.





# NATURAL STONE CLADDING RANGE

## CONTENTS



Z-Stone Cladding	04
Penrhyn Bangor Blue Slate Z-Stone	06
Black Slate Z-Stone	08
Blue Diamond Z-Stone	09
Nordic Stone Z-Stone	10
Quartz Z-Stone	11
Granite Z-Stone	12
Multi-Coloured Slate Z-Stone	13
Scandinavian Mix & Icelandic Grey	14
Contemporary Z-Stone	16
Stone Veneer Range	18
Z-Stone Fitting Instructions	20
Stone Veneer Fitting Instructions	22



Installation video guide at  
[LBSproducts.com](https://www.lbsproducts.com)



# THE BEAUTY AND CHARACTER OF NATURAL STONE WILL ENHANCE YOUR HOME

Z-Stone is available in a range of natural slate and stone finishes across two formats: Regular and Sky Panel. Suitable for both internal and external use. (45-50mm thick)

## REGULAR / SKY PANEL

Range available with and without fixing clips, see page 5 for details.



• Penrhyn Bangor Blue Slate  
(Available in Sky Panel only)



• Nordic Stone



• Multi Slate



• Black Slate



• Quartz



• Scandinavian Mix



• Blue Diamond



• Granite



• Icelandic Grey

Thinner and lighter, our Contemporary Z-Stone is perfect for use in bathrooms, wet rooms or for feature walls. (20-25mm thick)

## CONTEMPORARY RANGE



• Forest Marble (Honed)



• Forest Marble (Riven)



• Black Slate (Thick)



• Black Slate (Thin)



• Rustic Slate (Riven)

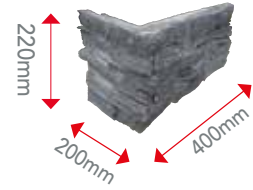


• Blue Diamond (Thick)



**LBS stone**® is available in 3 formats:

- Regular Panel
- Sky Panel
- Contemporary



\*90° Fixed corners are required for exterior applications.

Weight - 80kg per m<sup>2</sup>

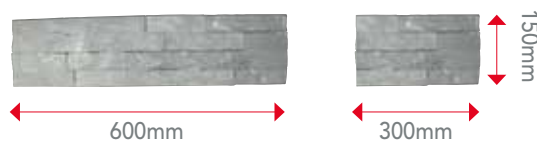
**Regular Panel** format allows every piece to be butted together to form an interior corner if required.



**Sky Panel** format allows every piece to be butted together to form an interior corner if required. It also has a built in clip for added fixing security.  
NB: The Sky Panel format must be used above heights of 3 metres.



**Contemporary** format uses single size pieces in addition to separate long and short corners. Only 20mm thick. For interior use.



#### SUITABILITY:

- Exterior design feature
- Chimney breasts/fireplaces
- Water features
- Front porch areas
- Timber frame construction

#### ACCESSORIES:

- LBS adhesive (15kg bag covers 3m<sup>2</sup>)
- Magnesium Board
- Sealer
- Colour Enhancer
- Cement Away Cleaner \*

\*Please ensure when using chemicals that appropriate protective clothing is worn.

#### CLEANING:

- Do not use hydrochloric acid as it can cause minerals present in the stone to react.

#### MAINTENANCE:

- None required, however, in areas of high traffic we offer a range of sealers and cleaners if required.



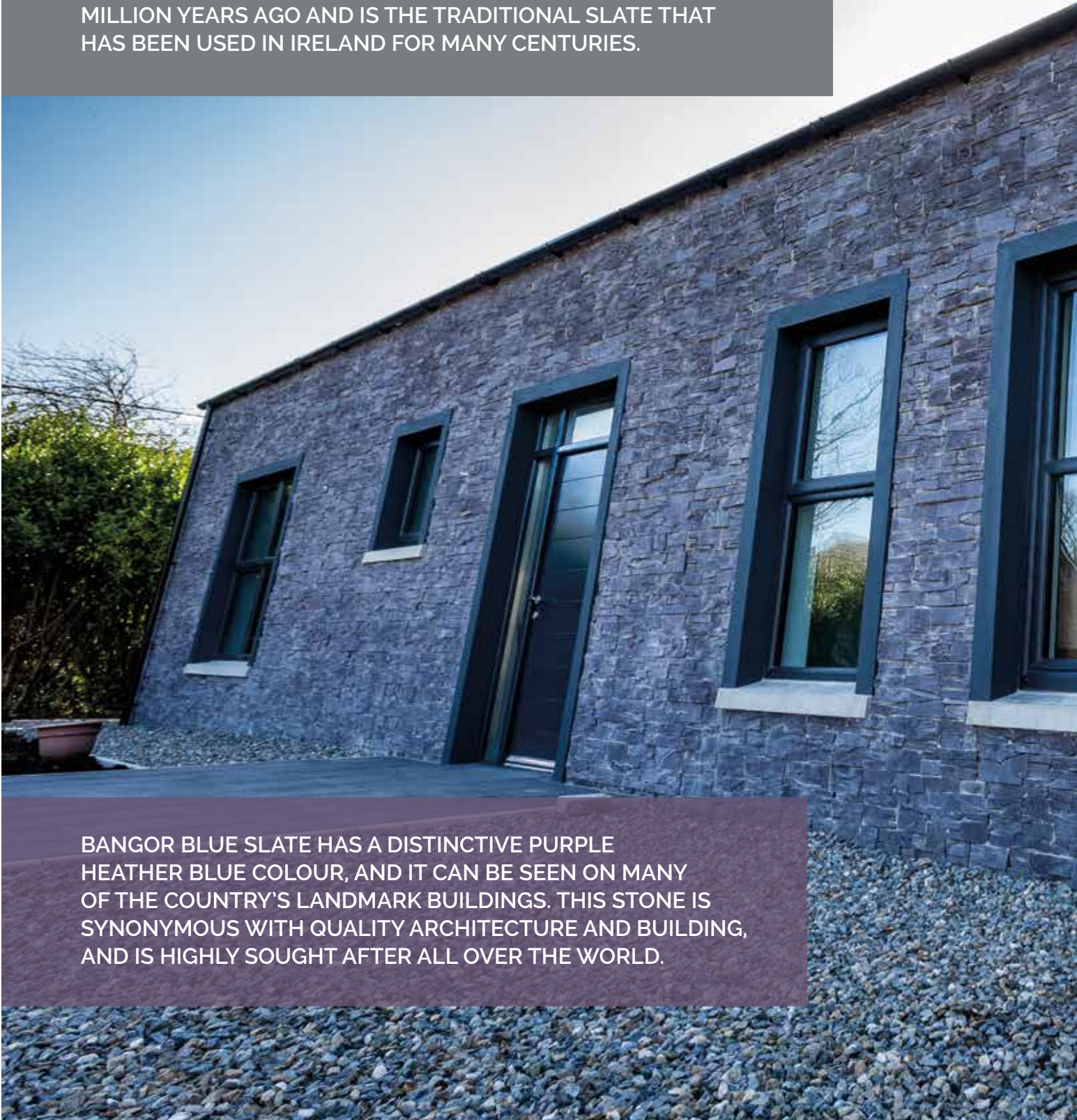
Installation video guide at  
**LBSproducts.com**



# PENRHYN BANGOR BLUE Z-STONE

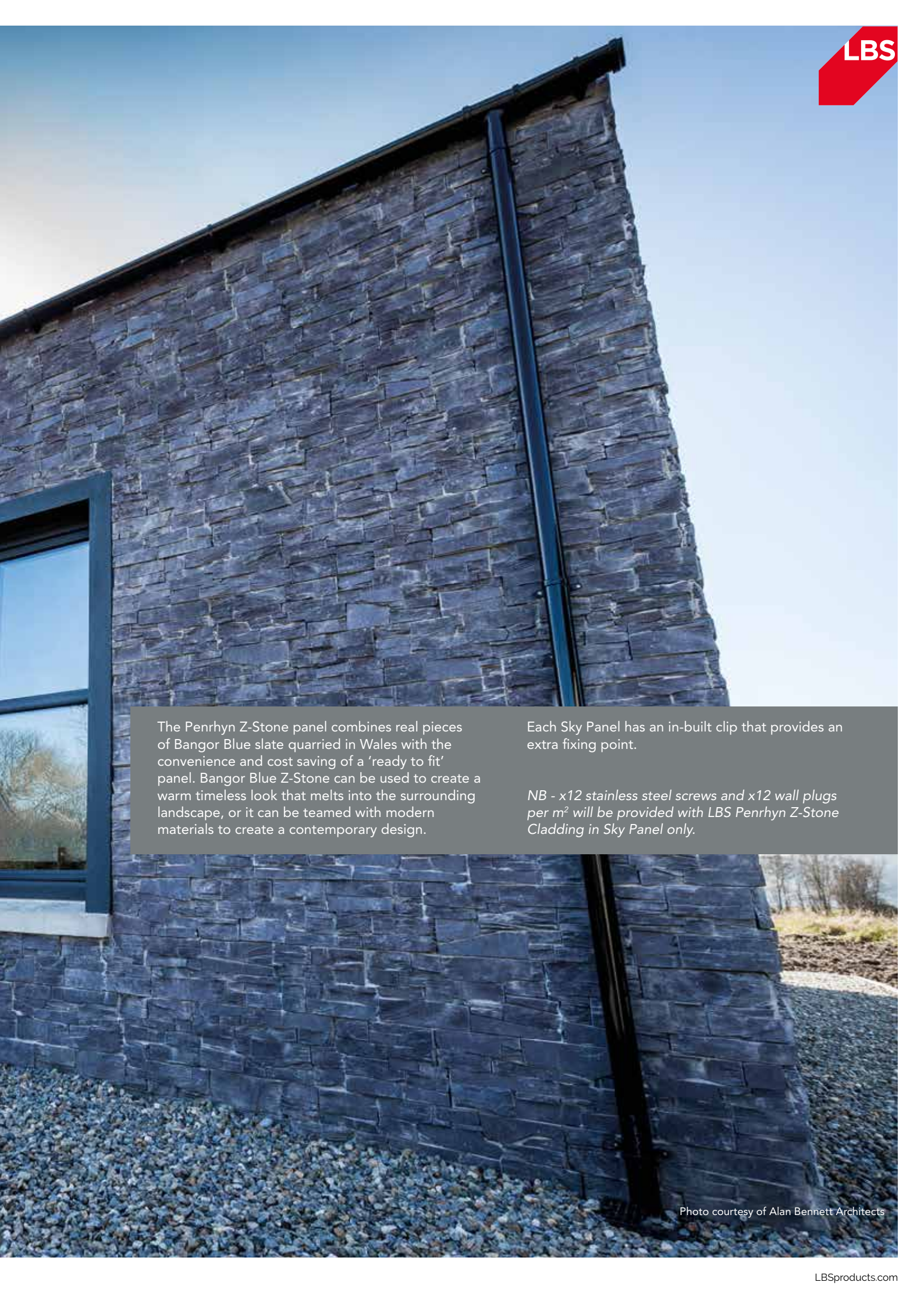
AVAILABLE IN SKY PANEL ONLY (45-50mm thick)

PENRHYN BANGOR BLUE IS UNIVERSALLY REGARDED AS BEING THE BEST QUALITY SLATE IN THE WORLD. IT IS QUARRIED FROM SLATE DEPOSITS IN NORTH WALES THAT WERE FORMED 600 MILLION YEARS AGO AND IS THE TRADITIONAL SLATE THAT HAS BEEN USED IN IRELAND FOR MANY CENTURIES.



BANGOR BLUE SLATE HAS A DISTINCTIVE PURPLE HEATHER BLUE COLOUR, AND IT CAN BE SEEN ON MANY OF THE COUNTRY'S LANDMARK BUILDINGS. THIS STONE IS SYNONYMOUS WITH QUALITY ARCHITECTURE AND BUILDING, AND IS HIGHLY SOUGHT AFTER ALL OVER THE WORLD.





The Penrhyn Z-Stone panel combines real pieces of Bangor Blue slate quarried in Wales with the convenience and cost saving of a 'ready to fit' panel. Bangor Blue Z-Stone can be used to create a warm timeless look that melts into the surrounding landscape, or it can be teamed with modern materials to create a contemporary design.

Each Sky Panel has an in-built clip that provides an extra fixing point.

*NB - x12 stainless steel screws and x12 wall plugs per m<sup>2</sup> will be provided with LBS Penrhyn Z-Stone Cladding in Sky Panel only.*



# BLACK SLATE Z-STONE

AVAILABLE IN REGULAR OR SKY PANEL ONLY (45-50mm thick)

SIMILAR IN APPEARANCE TO IRISH BASALT, BLACK SLATE Z STONE IS ONE OF THE MOST POPULAR CHOICES IN THE LBS RANGE.



ITS WARM GREY AND CHARCOAL TONES MAKE IT A FIRM FAVOURITE ADAPTABLE TO ANY BUILD, MODERN OR TRADITIONAL. FROM A SMALL FEATURE WALL, TO A LARGE COMMERCIAL BUILDING, BLACK SLATE CAN BE ADAPTED TO SUIT ANY DESIGN.



# BLUE DIAMOND Z-STONE

AVAILABLE IN REGULAR OR SKY PANEL ONLY (45-50mm thick)



ONE OF THE MOST ATTRACTIVE STONES IN THE RANGE; BLUE DIAMOND COMBINES STEELY BLUES, SHIMMERING GREYS AND OCHRE TONES TO CREATE A NATURAL STONE PANEL WITH BAGS OF CHARACTER. ITS LIGHT NEUTRAL COLOURS AND ACCENTS OF BROWN MAKE IT THE PERFECT CHOICE FOR AN INTERNAL WALL OR FIREPLACE. USED EXTERNALLY THE CHUNKIER STONE PIECES GIVE A VERY NATURAL FINISH AND AS THE STONE WEATHERS OVER TIME IT WILL MELLOW TO CREATE A FINISH REMINISCENT OF DONEGAL SLATE.



# NORDIC Z-STONE

AVAILABLE IN REGULAR OR SKY PANEL ONLY (45-50mm thick)



SIMILAR TO SCANDANAVIAN STONE, NORDIC STONE IS ONE OF THE LIGHTER COLOURED PANELS IN THE Z-STONE RANGE. WITH ITS COOL MIX OF GREYS, GREENS, AND WARM BEIGES IT OFFERS SOMETHING LIGHT IN COLOUR BUT MORE CONTEMPORARY AND UNUSUAL THAN CLASSIC QUARTZ OR GRANITE. IT IS LIGHT ENOUGH TO USE INSIDE THE HOME AND IS A POPULAR CHOICE FOR CHIMNEY BREASTS OR FEATURE WALLS.



# QUARTZ Z-STONE

AVAILABLE IN REGULAR OR SKY PANEL ONLY (45-50mm thick)



THE BLEND OF NATURAL CREAM, BEIGE AND YELLOW IN OUR QUARTZ Z-STONE ADDS INSTANT WARMTH AND CHARM TO ANY SCHEME OR BUILDING. ARCHITECTS FAVOUR THE FLEXIBILITY OF THIS NATURAL PRODUCT, WHICH CAN BE USED TO ENHANCE BOTH TRADITIONAL AND MODERN SCHEMES. THE RICHNESS OF THE COLOURS WILL ENHANCE ANY HOME INSIDE OR OUT.



# GRANITE Z-STONE

AVAILABLE IN REGULAR OR SKY PANEL ONLY (45-50mm thick)



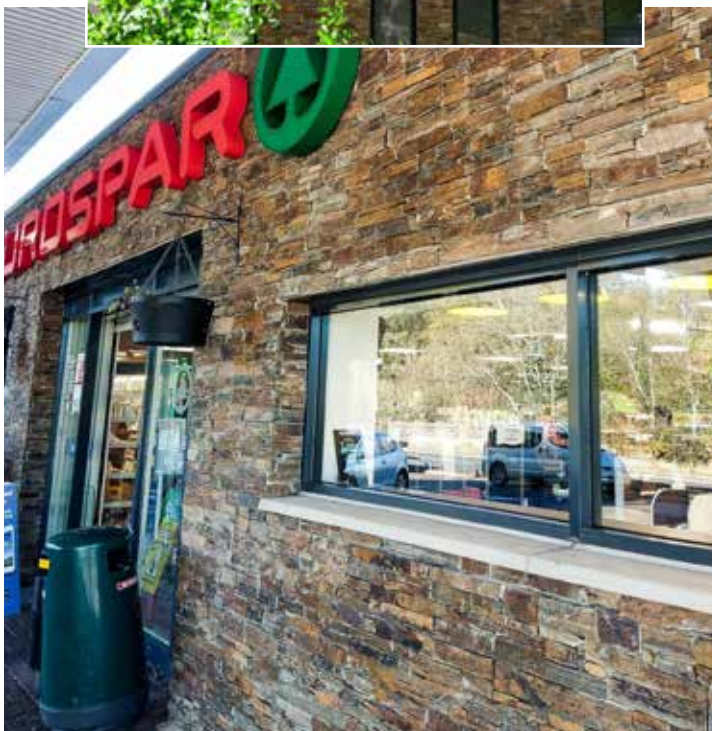
COMMONLY ASSOCIATED WITH QUALITY AND PRESTIGE, GRANITE REMAINS THE CORNERSTONE OF LUXURY BUILDING AND DESIGN. THE INSTANTLY RECOGNISABLE AND HIGHLY ATTRACTIVE TEXTURED FINISH OF THIS NATURAL STONE, MAKES IT IDEAL FOR TRADITIONAL SCHEMES. SIMILAR IN APPEARANCE TO MOURNE GRANITE ITS WARM YELLOWS AND CREAMS MAKE IT PERFECT FOR USE INDOORS. A TIMELESS STONE THAT WILL ENHANCE ANY BUILD.





## MULTI-SLATE Z-STONE

AVAILABLE IN REGULAR OR SKY PANEL  
ONLY (45-50mm thick)



A DESIGNER'S DELIGHT, THIS BEAUTIFUL STONE CATCHES THE LIGHT TO REVEAL AN ARRAY OF GREY, RED, AND PURPLE SLATE. A VERY WARM AND NATURAL CHOICE OF Z-STONE, IT IS EQUALLY AT HOME IN BOTH RURAL AND URBAN SETTINGS. ITS RANGE OF COLOURS OPEN UP OPPORTUNITIES WITHIN THE HOME, TO CREATE A MOOD THAT SUITS YOUR DESIGN, WHETHER IT'S A COSY AMBIENCE YOU WANT, OR SOMETHING CHIC AND MODERN.



# SCANDINAVIAN MIX Z-STONE

AVAILABLE IN REGULAR OR SKY PANEL ONLY (45-50mm thick)

SAY HELLO TO THE SCANDINAVIAN MIX. ON-TREND, THIS SHADE IS A MIX OF GREEN, GREY & BLACKS. A RANGE OF BENEFITS AND PERFECT FOR EXTENSIONS, FIREPLACES, PORCHES AND OTHER DISTINCTIVE PARTS OF YOUR HOME.



## ICELANDIC GREY Z-STONE

AVAILABLE IN REGULAR OR SKY PANEL ONLY  
(45-50mm thick)

OUR ICELANDIC GREY Z STONE IS A CONTEMPORARY COLOUR. NATURALLY ATTRACTIVE, THIS WILL ADD SOME DEFINITION AND CHARACTER TO YOUR SPACE. THE SUBTLE COLOUR WILL COMPLIMENT MANY ARCHITECTURAL STYLES.



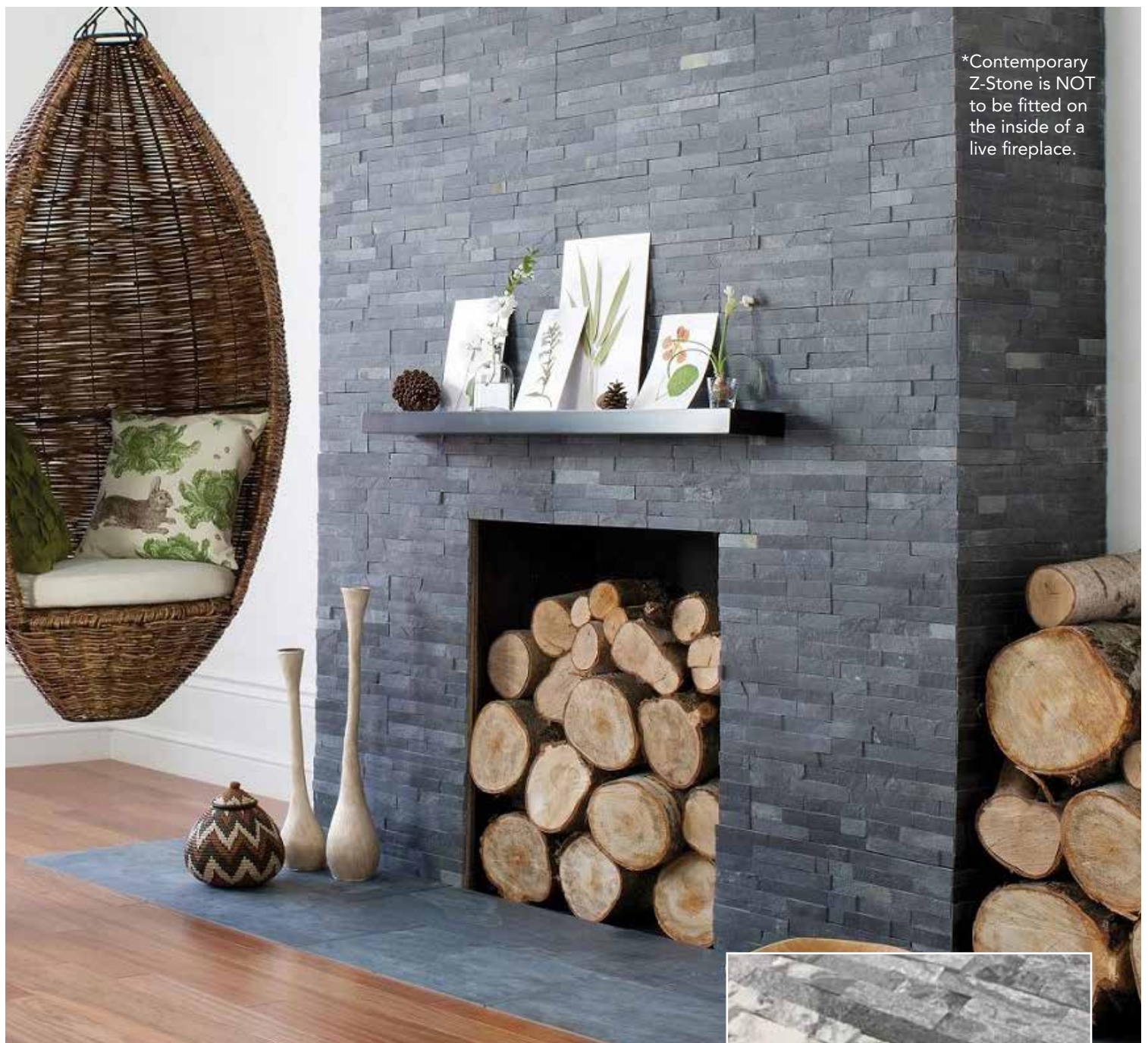


LBS natural stone products add texture and contrast to enhance any home.



# CONTEMPORARY Z-STONE

(20-25mm thick)



\*Contemporary Z-Stone is NOT to be fitted on the inside of a live fireplace.

THE CONTEMPORARY RANGE OF Z-STONE IS MADE FROM NATURAL SLATE AND STONE PIECES BONDED TOGETHER WITH A POLYMER RESIN. THESE NEW PANELS ARE A LIGHTWEIGHT ALTERNATIVE TO THE STANDARD CONCRETE BACKED Z-STONE. THEY ARE IDEALLY SUITED FOR INTERIOR USE, IN AREAS SUCH AS WET-ROOMS.





**ONLY**  
**20-25mm thick**  
 SUITABLE FOR  
 BATHROOMS  
 AND  
 WETROOMS

Panels are  
 600mmx150mm  
 (20mm nominal  
 thickness), with  
 long and short  
 corners to suit.

## CONTEMPORARY Z-STONE



### Forest Marble (Honed)

A bold combination of blacks and whites, honed to a smooth polished finish.



### Forest Marble (Riven)

A riven variation of the Forest Marble pattern with a more rugged textured appeal.



### Rustic Slate (Riven)

A traditional combination of thick deep reddish rock and grey pieces combined to give a natural baked style.



### Black Slate (Thick)

Strips of Black Slate with a split face finish to give a natural, simple, but distinctive look.



### Black Slate (Thin)

Thin pieces of black slate are stacked on this panel to give an eye catching appeal.



### Blue Diamond (Thick)

Fresh and modern, these thin pieces of light steely blue/grey and ochre tones have been fixed in a staggered design providing a modern finish.



# stone veneer

SELECT CUTS OF NATURAL STONE  
(30mm thick)

\*Blue Diamond shown here.

## BENEFITS

- Cost saving on labour and material compared with traditional masonry
- Made from natural stone only 30mm thick – no need for special sills
- Achieve your desired look from 4 stunning colour options - no lines
- No additional fixings over heights of 3m
- Fixed external corners available
- Maintenance free



## CREATE A BEAUTIFUL NATURAL STONE WALL FINISH WITH LBS STONE VENEER.

At only 30mm thick, these individually pre-cut natural stone pieces can be fitted and shaped as required to give a finish very similar to traditional masonry. The benefit over traditional quarry stone is that there will be very little wastage and there is no additional foundation required.

The stone can be fitted relatively quickly in either a dry build or grouted finish. Although not essential, it is recommended that stone veneer is fitted by a tradesman with some experience of fitting similar products.





\*Black Limestone shown here.

### BLUE DIAMOND STONE VENEER



One of the most loved stone mixes in the LBS range - Blue Diamond combines a mix of steely blue grey and ochre stones.

The Blue Diamond stone veneer pieces have an attractive cleaved face that give them a very natural 'traditional masonry' look. The mix of stones allows the house builder to create their own desired finish.

### JERUSALEM SANDSTONE STONE VENEER



With warm golds and yellows, Jerusalem Sandstone is the Ideal choice for rustic and traditional farmhouse style properties. Full of warmth and character it is perfect for use inside.

The natural split face of the Jerusalem Sandstone veneer gives a very natural hewn finish that is hard to discern from traditional stone masonry once fitted.

### BLACK LIMESTONE STONE VENEER



The neutral greys and graphites of Black Limestone Veneer are the perfect base for any house design. The stone will add a natural warmth to the build without overwhelming it.

Black Limestone can be used for traditional style builds or can be teamed with more modern materials and structures to bring it right up to date.



### DONEGAL MIX STONE VENEER

The light and dark tones of the Donegal Mix is a beautiful earthy mix. They are sold in a mix of random sizes around 30mm thick. They can be fitted in any pattern and larger pieces can be cut and dressed to suit. This veneer will make a great cladding option for old stone cottages or adding an old stone look to a new building.

#### Dimensions (nominal)

Stone Veneer is sold in pallet lots of 10 sqm. Each pallet contains a mix of rectangular/square pieces varying between 350 x 210mm and 150 x 80mm. Corners are sold separately.



# FITTING INSTRUCTIONS FOR Z-STONE

Z-Stone is available in 3 formats:  
Regular Panel, Sky Panel  
& Contemporary



## FITTING INSTRUCTIONS FOR Z-STONE

1. The Z-Stone system comprises of 2 panels at 600 x 220mm, 1 panel at 400 x 220mm and 1 panel at 250 x 220mm. **Note: There are 4 pieces per box.** These can be used in most situations to achieve the desired finish. For special applications, i.e. curved or radial walling, contact the LBS Technical Team.
2. Z-Stone will not require a foundation, as it is a self-supporting unit.
3. It is best to apply Z-Stone to a concrete block wall free from any coatings e.g. gypsum, paint, loose plaster. The substrate must be deemed sound to support the weight of the product which is in excess of 85kg per m<sup>2</sup>. All new build concrete substrates containing mortar must be constructed a minimum of 7 weeks prior to fitting Z Stone cladding.
4. Always begin by quantifying the area. We recommend measuring out the area for regular panel (below 3m) and Sky panel (above 3m). Work out the quantity of square metres you require by multiplying the width by the height (add 10% for wastage) and remove the areas for windows and door openings. You can work out the quantity of corner pieces you require by calculating the total linear height of the external wall corners required. Reveal corners must be measured separately.
5. It is important to measure from the top of the wall to the bottom to ensure you finish with a full-size panel at the top. This commonly means cutting the first course so that it is the desired height. Mark out the first course and cut a wooden batten and ensure it is level. Once levelled this batten can be nailed to the wall and you are ready to begin. You should leave the batten in place for a minimum of 48 hours. You can come back to the first course at the end of the job.
6. Before you start, ensure the wall is clean and level. If the wall needs to be waterproofed, it is recommended that a suitable cement scratch coat is applied first with a waterproofing liquid added or Hydro Ban waterproofing is applied depending on project type, please consult the LBS Technical Team.
7. Mix the LBS Z-Stone Adhesive and generously apply with a notched trowel to both the back of the panel and the wall. We recommend a minimum of 5mm on both surfaces. Adhesive mixing instructions can be found on each bag. **Note that one 15kg bag of adhesive will cover 2-3 m<sup>2</sup> of panel.**

8. If the wall has any external corners, you must use the pre-made corner pieces and fit these first, alternating the long and short legs to give a broken bond effect so as not to show any joints within the vertical course of the Z-Stone. Internal corners can be created by bonding two panels together.



**Please note:** if you intend to return your pre-made Z-Stone Corners into window or door reveals you should have your blockwork recessed by 50mm to allow corners to return and not obstruct window or door openings. Z-Stone may not be returned on the underside of window or door heads. To achieve a finish here, use a special width steel support lintel, or alternatively finish with slate reveal unit or rubbed-up plaster detail. Expansion tape is available to neatly close off any remaining gaps and provide a weatherproof finish.

9. Always tap the panel into the wall using a rubber mallet to ensure sound contact between the panel and the wall, and displace any trapped air pockets. There is no need to put any adhesive into the joints, as this is a dry joint product.
  10. Work your way along the wall and remember to always alternate the different sized panels to stagger the joints. The Z shaped format on the panels allows one panel to fit seamlessly into the next, creating a stunning natural stone façade.
- \*For Contemporary Z-Stone panel, fit in broken bond format as per traditional tiling methods.*
11. If a unit has to be cut to a reduced size to finish the wall, always cut the Z shape joint, as this will maintain the seamless finish. During the fitting process, all cutting of Z-Stone panel should be carried out by using table saw with diamond tip blade and water supply.





## Installation video guide at [LBSproducts.com](https://LBSproducts.com)

12. It is good practice to buff off any excess visible mortar with a mini grinder prior to installation. This allows for tighter jointing.
13. As mentioned earlier, the Sky panel format must be used when fitting on heights of 3 metres or above. The Sky panel comes with integrated stainless-steel clips for added fixing security in conjunction with LBS Z-Stone Adhesive. You can then drill these panels into the wall. Screws and plugs are provided as part of the Sky panel system.
14. Finish by removing the timber batten at the base of the wall and installing the first cut course. Hose down and clean the wall, ensuring it is clean and free from mortar.
15. When fitting Z-Stone onto a structure which requires a backing board, you must ensure that appropriate backing support is used (LBS Cementboard). This must be secured to either a timber or metal frame with appropriate fixings and must be guaranteed to support the Z-Stone system, weighing in excess of 85kg per m<sup>2</sup>.

All Z-Stone used in this application must be Sky panel format and each unit must be mechanically secured with fixings supplied by LBS.



*\*LBS recommend you consult your timber/metal frame engineer to check that the design and fixings are appropriate for support.*



*Stainless steel clips which are integral to the Z-Stone Sky Panel are required at heights above 3m*

3m

**Please note:**  
When using LBS adhesive allow one bag (15kg) of adhesive for 3m<sup>2</sup> and the adhesive must be applied generously on both the back of the panel and the wall surface.

## ARCHITECTURAL RESOURCES

LBS has a team of technical sales professionals based throughout the country. We also have an in-house technical support team, whose job it is to provide help and support to any project.

We can provide site specific fixing specifications for any project upon request. In addition, our website offers an architectural resource section, which includes suggested

NBS specifications, data sheets, CAD drawings and other valuable resources.

Our experienced team of professionals are fully up-to-date on current building regulations (in both the Republic of Ireland and the UK), and are on hand to provide help and assistance, whether with pre-specification or after sales support.



## PRODUCT OVERVIEW:

**LBS Stone Veneer** is a 100% natural stone cladding system, cut to 30mm nominal thickness to give the exact look of 'full thickness' stone. Suitable for interior and exterior projects, Stone Veneer is light and easy to install and offers a cost saving on labour and material compared with traditional masonry. Available in 4 beautiful colours: Blue Diamond, Jerusalem Sandstone, Black Limestone and Donegal Mix. Stone Veneer is sold per m<sup>2</sup> and each pallet contains 10m<sup>2</sup> which includes a mix of rectangular and square pieces, varying in size. Stone Veneer pre-made corner pieces are also available, which allow for the seamless creation of corner detail.

## ESTIMATING MATERIALS:

### Stone

To estimate the quantity of Stone Veneer you need simply multiply the height by the width of the area to be covered. Then subtract any openings such as doors and windows. This is the total surface area for which you will need flat stone. It is good practice to allow 10% for wastage.

### Corners

To estimate how many corners you will need simply measure the vertical external corners. If the window and door jambs require corner stone also measure the vertical length required for these. Please note that it is advisable to allow some extra time for cutting and trimming. Corners are sold per linear metre.

### Adhesive

We recommend using LBS adhesive for the installation of Stone Veneer. To determine the quantity of adhesive required, allow one bag per 3m<sup>2</sup> of flat stone\*. Multiply the total linear length of corners by 0.2 to give you additional bags required for corner stone.

### Gun Pointing Mortar (GPM)

LBS recommend the use of gun pointing mortar (GPM) for grouting. It is available in both charcoal and natural grey. You should allow one bag of GPM for every 4m<sup>2</sup> of stone\*.

*\*Please note additional adhesive and GPM may be required depending on the stone type and quantity.*

## PREPARATION OF THE SURFACE:

### New Block/Concrete Surfaces

Ensure new block surfaces are clean and free from any debris and dust prior to installation. We recommend applying a scratch coat with a water sealer for chimney stacks to minimise water penetration.

All new-build concrete substrates containing mortar must be constructed a minimum of 7 weeks prior to fitting Stone Veneer cladding.

### Existing Surfaces

Existing plastered or dashed surfaces must be cleaned back to their original surface by sandblasting, water blasting, acid etching or wire brushing. Alternatively, a metal lath could be attached using appropriate corrosive resistant concrete fixings with a coating of adhesive fully applied over the metal lath. All contractors and specifiers must be confident that the existing surface will support the weight of the Stone Veneer once installed.

### Uneven / Rough Surfaces

For levelling any uneven or rough surface, it is recommended to apply a plaster scratch coat. The contractor must be content the surface will be solid and not loose so as to support the weight of the Stone Veneer.





# FITTING INSTRUCTIONS

## Step 1 - Pre Application

- Before applying, lay out a small area of stone in front of your project area to give you an idea of the laying pattern on your wall.
- Arrange the pieces so that they fit complimentary next to one another. It is useful to take photographs at this stage to refer back to and use a numbered sequence left to right.
- Try to avoid fitting similar size pieces together in the one area.
- First, coat the wall with LBS adhesive using a notched trowel but only apply enough adhesive that can be covered within 30 minutes.

## Step 2 - Installation

- Start at the corners and work towards the centre of the wall.
- Be sure to alternate long and short returns on corner pieces.
- Take a clean stone and slightly dampen the back, this will remove any dirt and will prevent moisture loss from adhesive.
- Apply a coat of adhesive approx. 10mm to the entire back of the flats and corners.
- Press the stone onto the wall rotating slightly to force some of the adhesive to squeeze out.
- Any adhesive forced out should be removed before the adhesive is allowed to set. Adhesive joints are better off narrow but should be consistent.
- Fill any gaps with small stones and use spacers where necessary to maintain the joint. Evaluate your work as you go along.
- Cut and trim the stones if you need particular size to fill the gaps.

## Step 3 - Fitting Stones & Grouting Joints

- Fill all the gaps between the stones with Gun Pointing Mortar (GPM) or alternatively grout with a sand cement/lime (check suitability) to slightly above the desired finish depth. The grout will tighten and seal up the area around the stone.
- Let the GPM/grout dry until it is firm but not solid. You want to be able to push on it without leaving fingerprints, but don't let the GPM/grout dry too much or it will be very difficult to strike.
- Strike the GPM/grout to achieve the desired finish look.
- Use your striking stick to scrape along the joints until the GPM/grout has a clean and even look.

## Step 4 - Sweeping the Stone

- Finally, use your medium bristled brush to sweep the dust off the stone.



Additional copies of this brochure or any other LBS publication are available on request.

Please send a scaled hard copy of your plans or a PDF file to [info@LBSproducts.com](mailto:info@LBSproducts.com) and we will quantify your drawings free of charge.

We offer a nationwide service through our distribution centres in Lisburn and Athy. For further information, please contact a member of our sales team using the details below.



Installation video guide at  
[LBSproducts.com](http://LBSproducts.com)

## LAGAN BUILDING SOLUTIONS LTD

### NORTHERN IRELAND

Lambeg Mills  
15 Ballyskeagh Road  
Lisburn  
BT27 5SX

**T 028 9264 8691**

### REPUBLIC OF IRELAND

The Swan  
Athy  
County Kildare  
R14 TE81

**T 01 8201551**



E [info@LBSproducts.com](mailto:info@LBSproducts.com)  
[LBSproducts.com](http://LBSproducts.com)